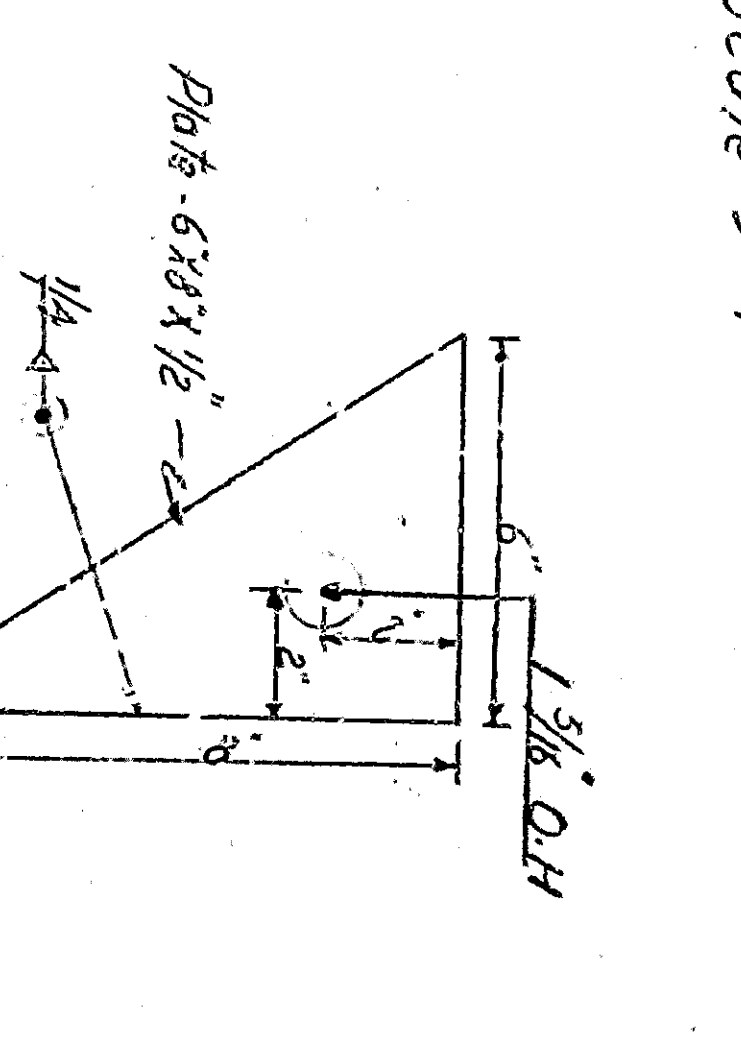
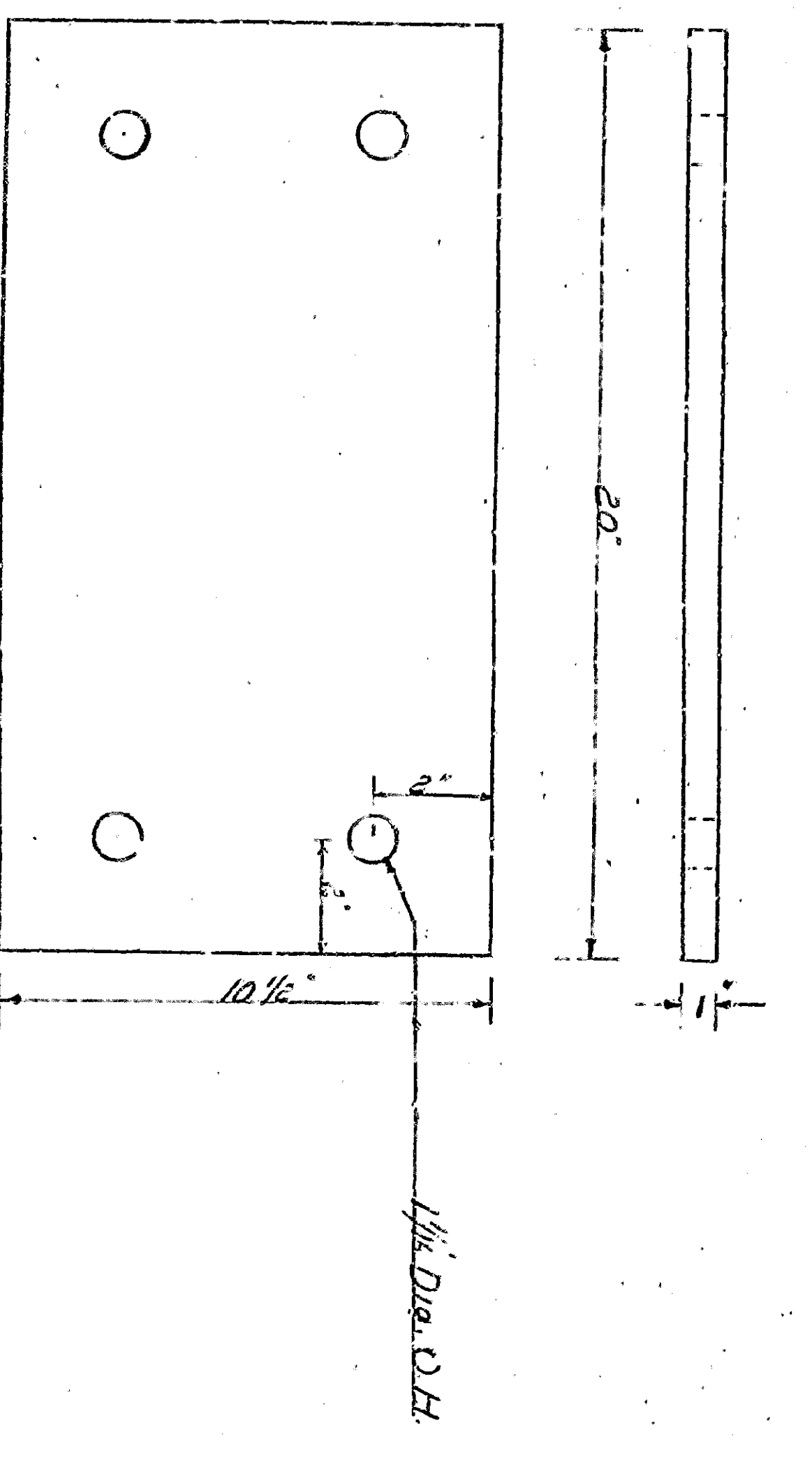
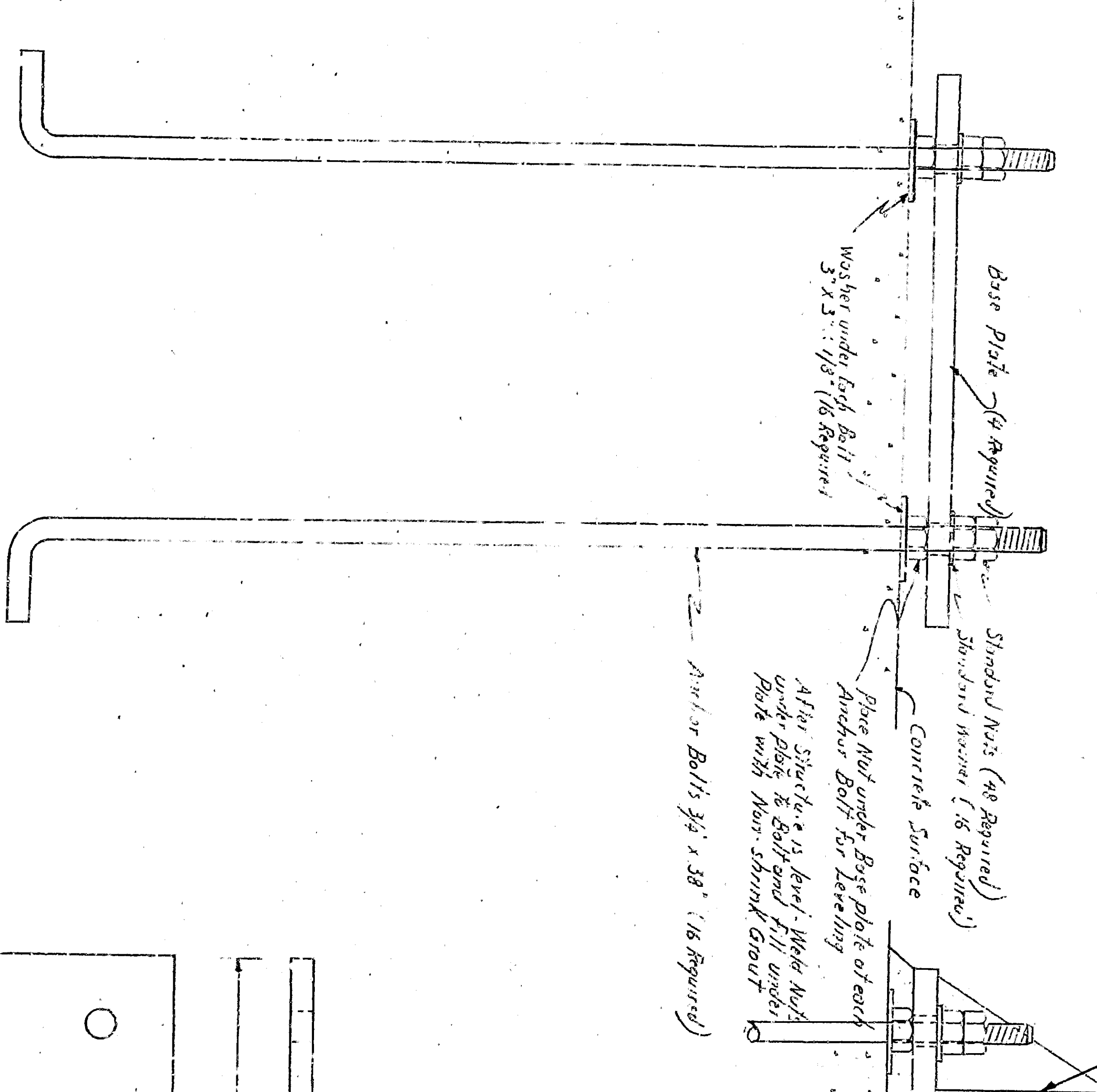
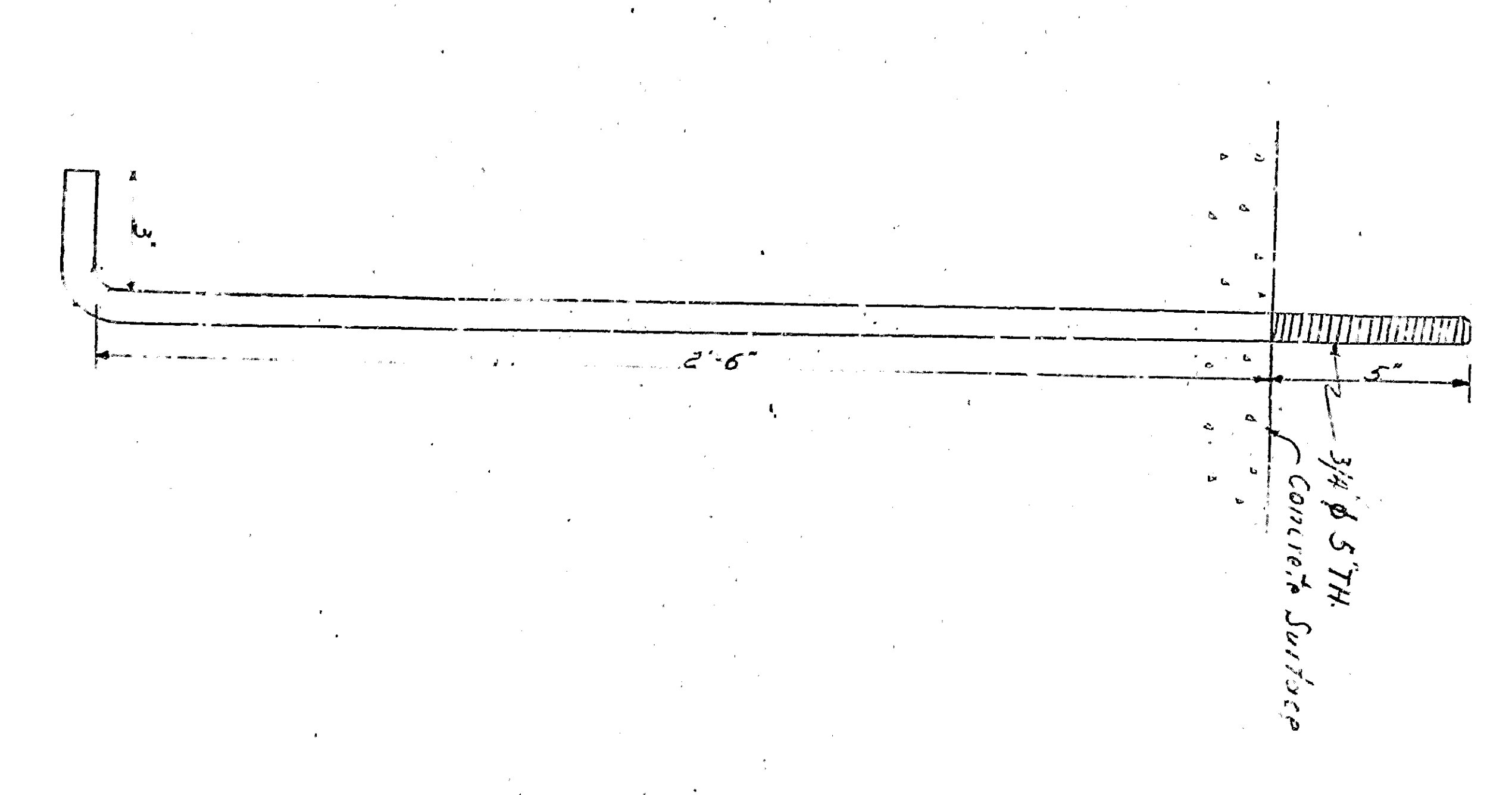
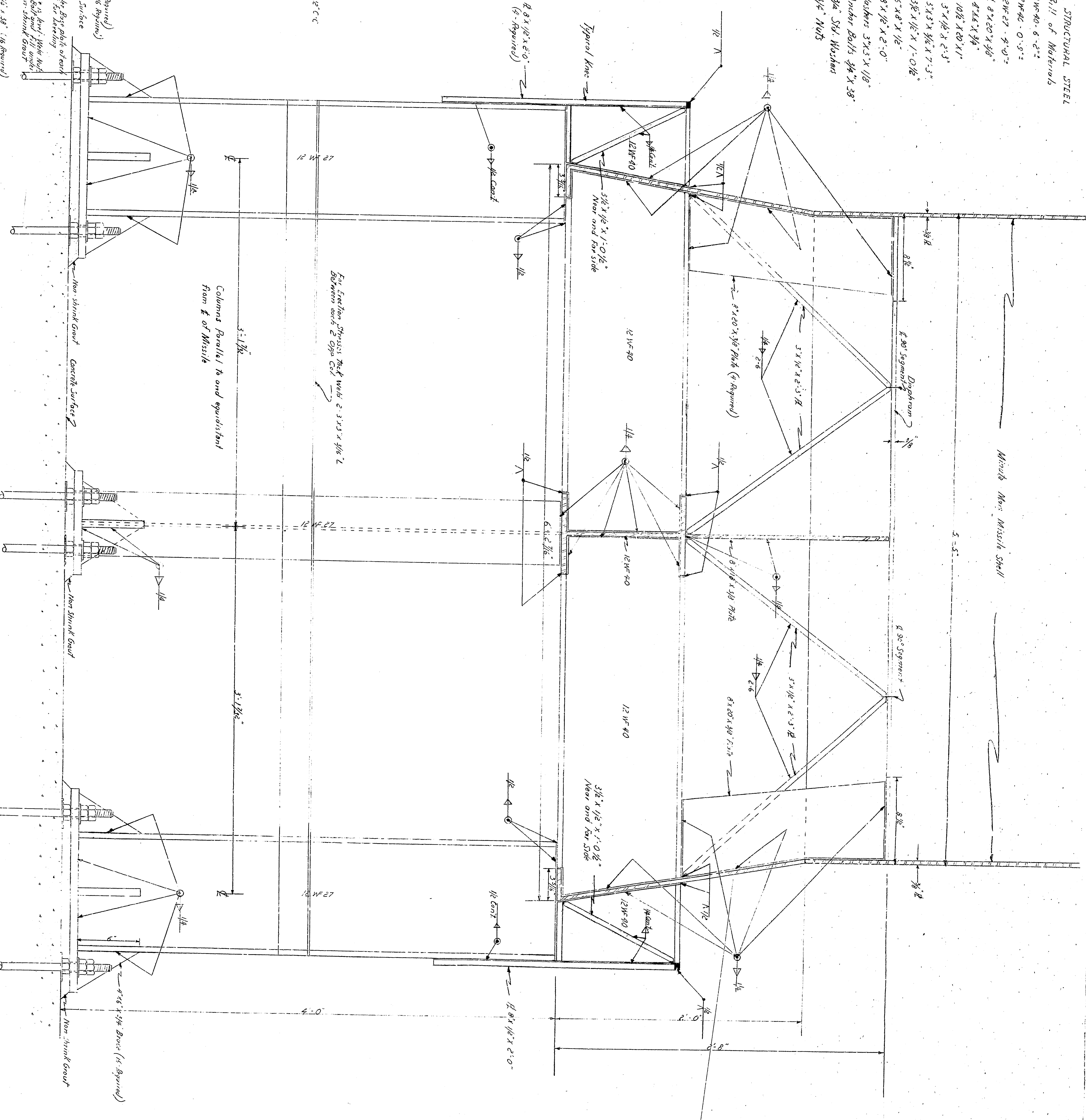


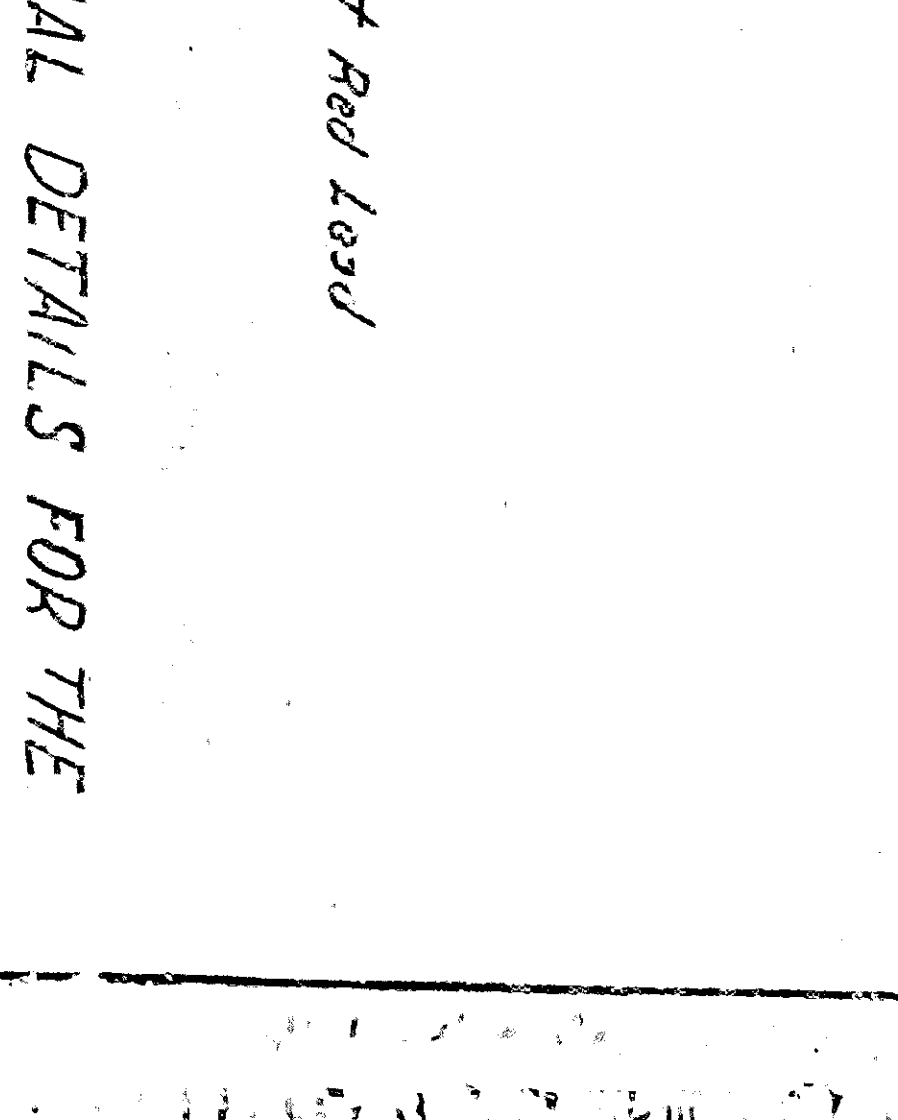
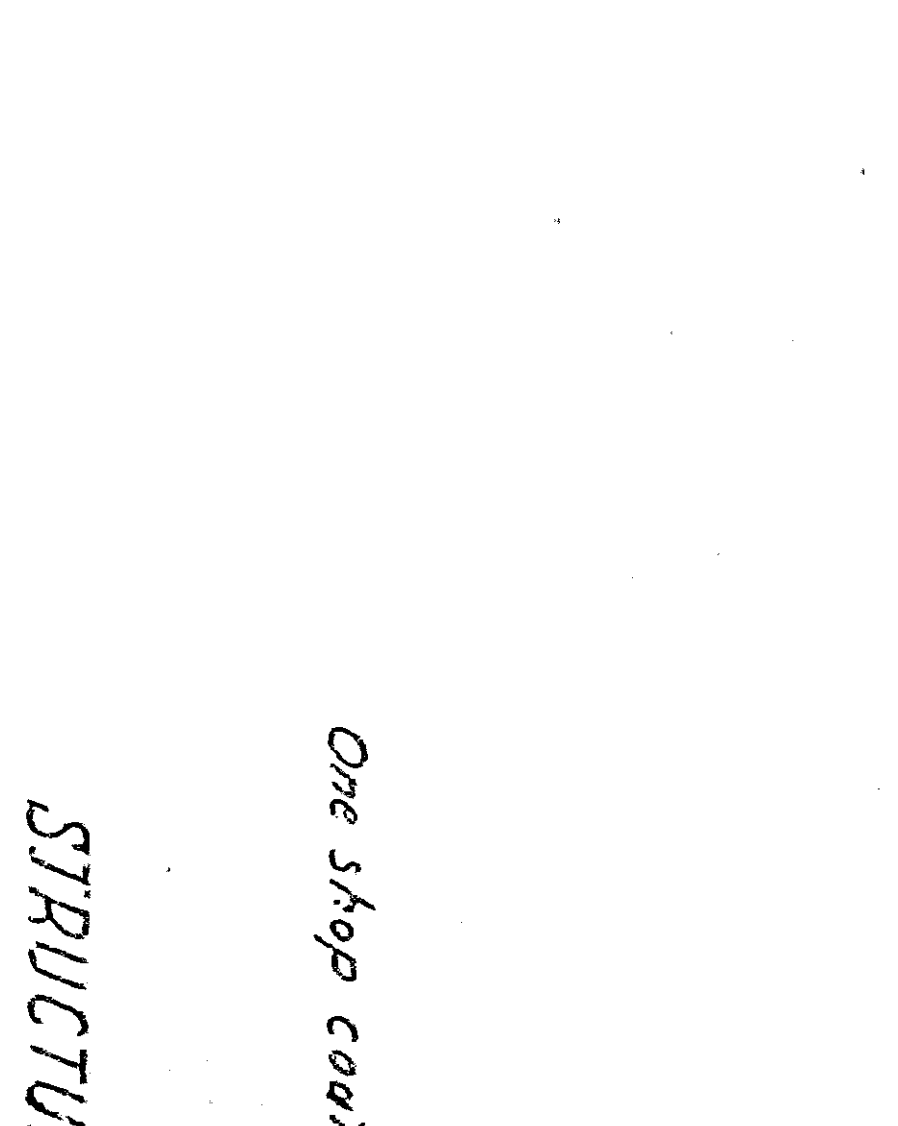
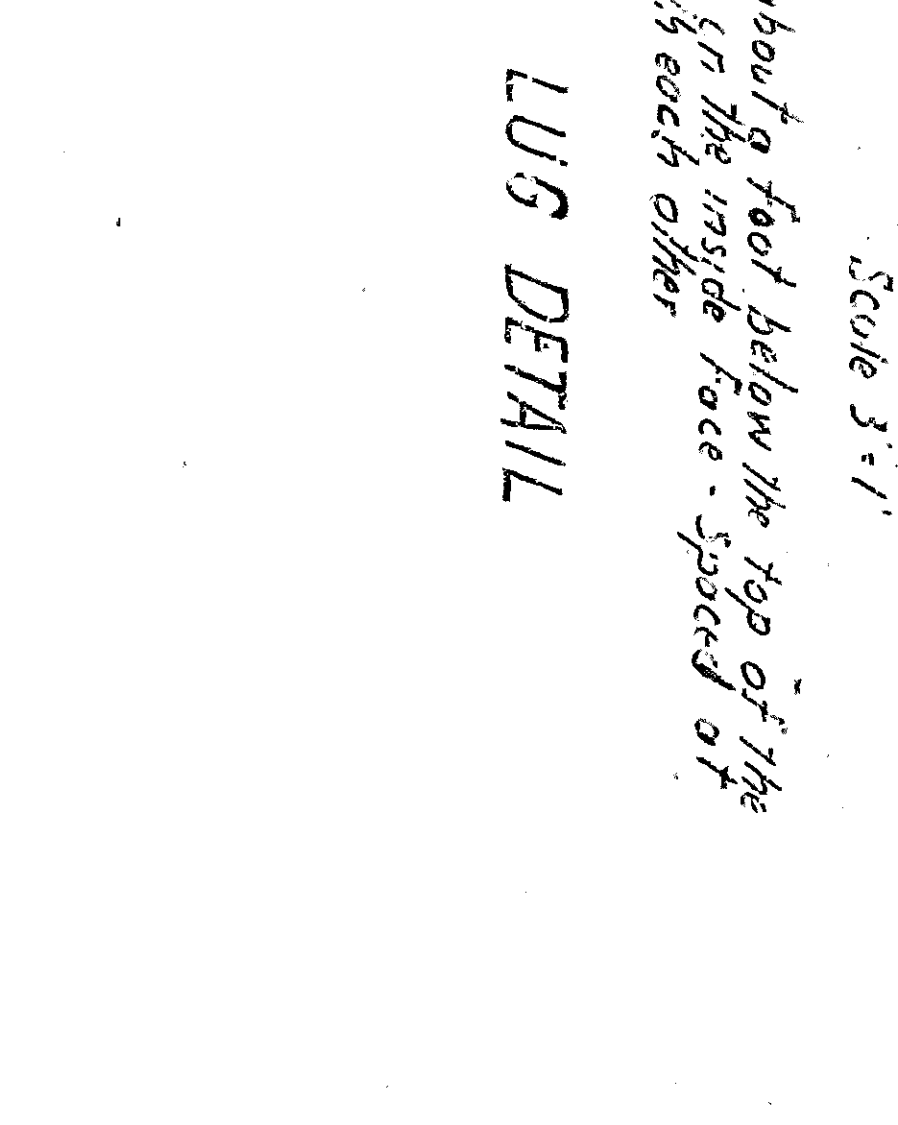
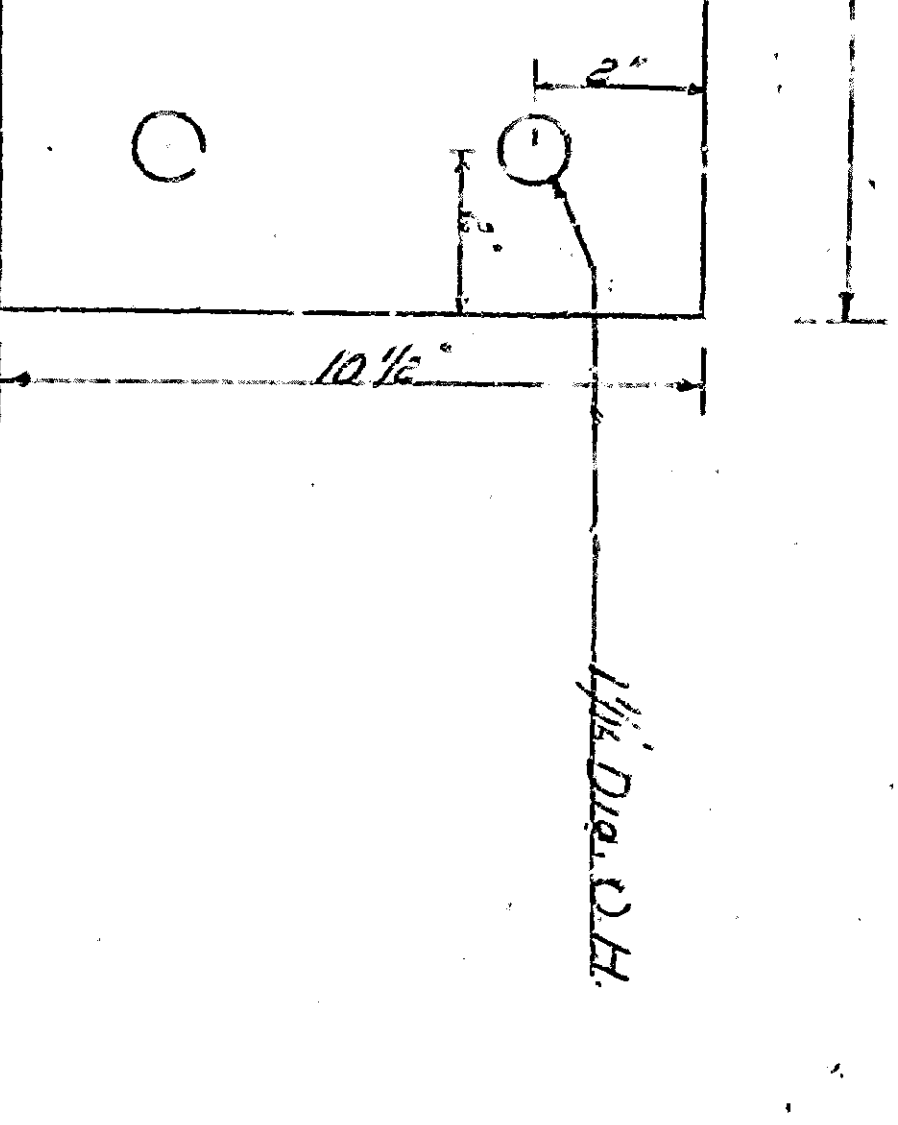
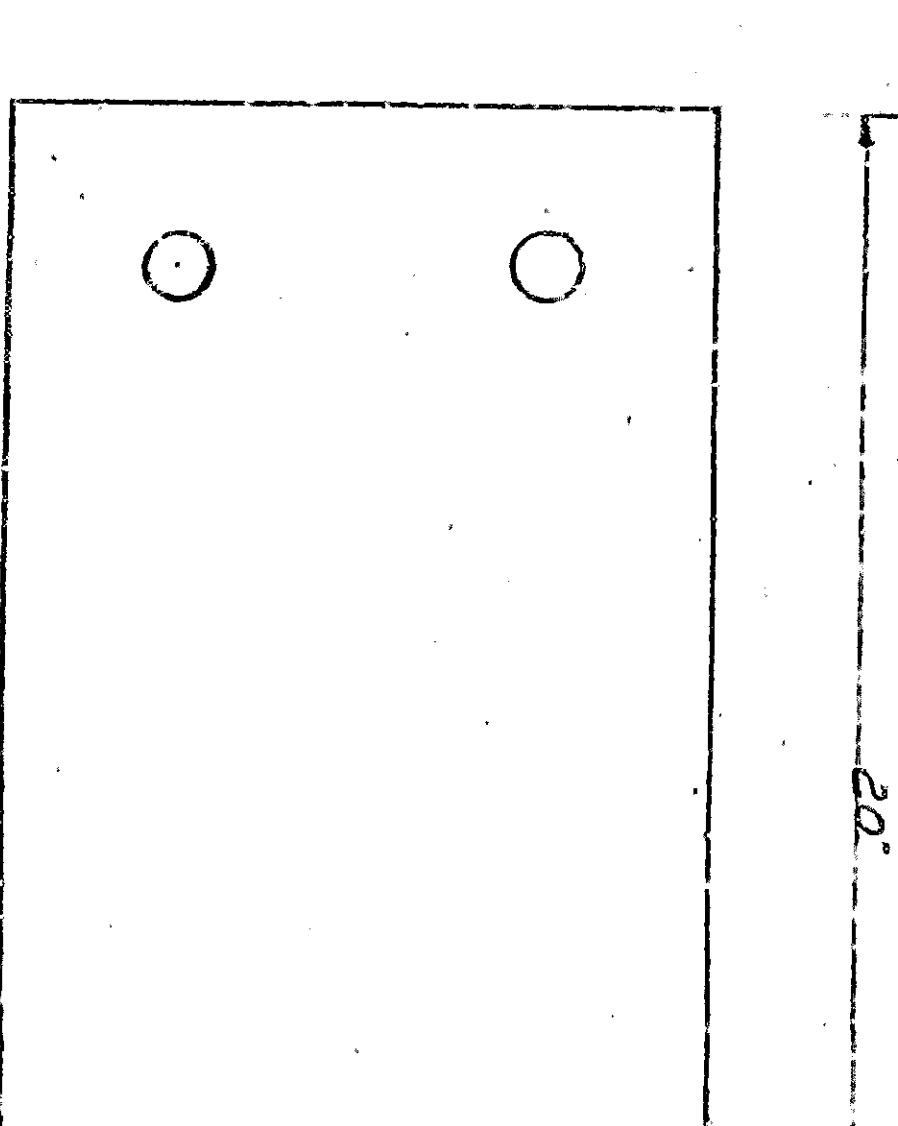
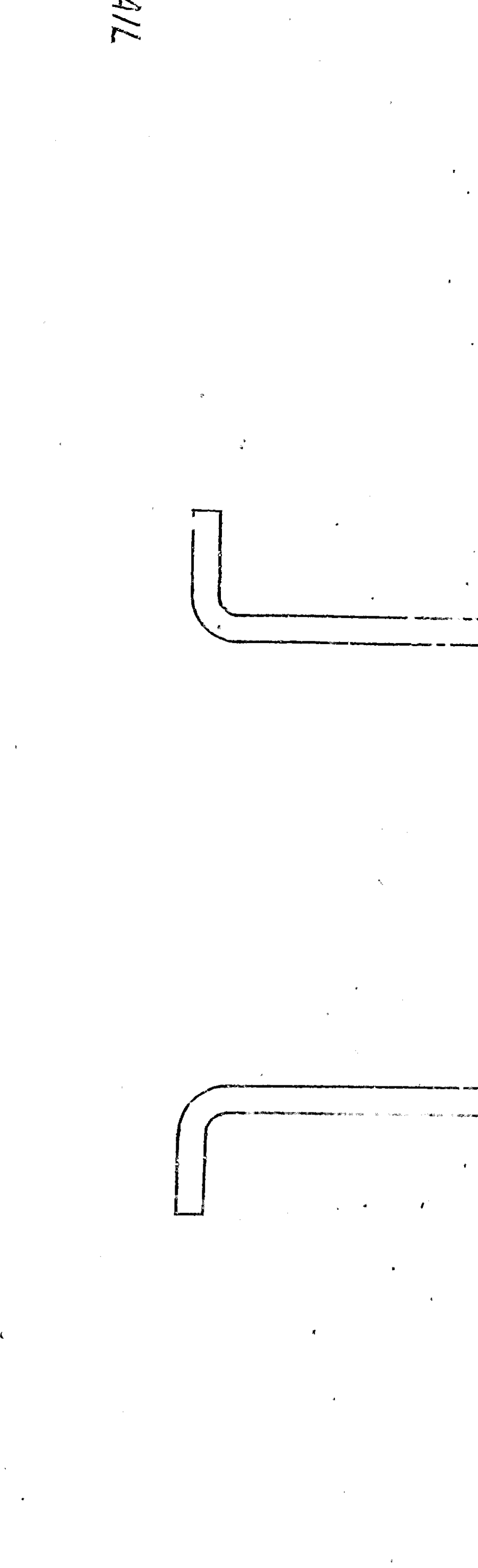
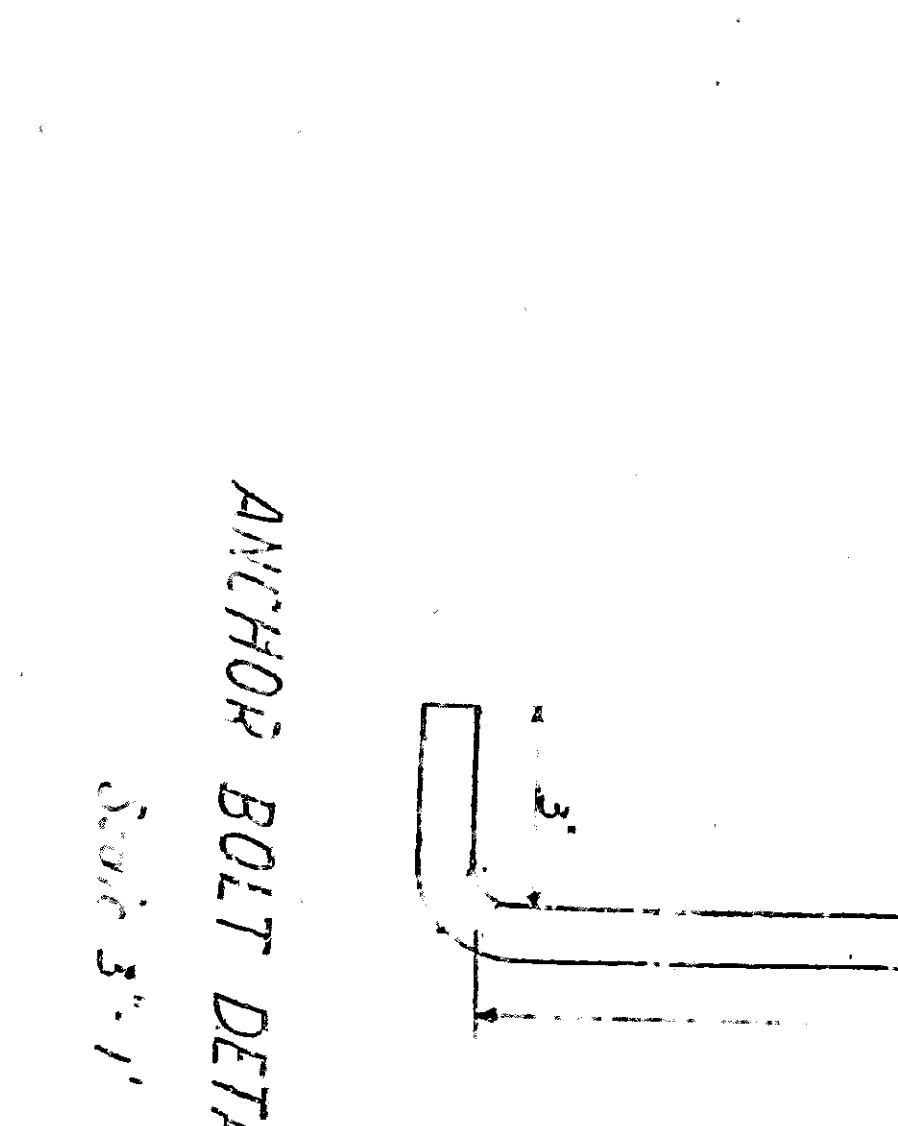
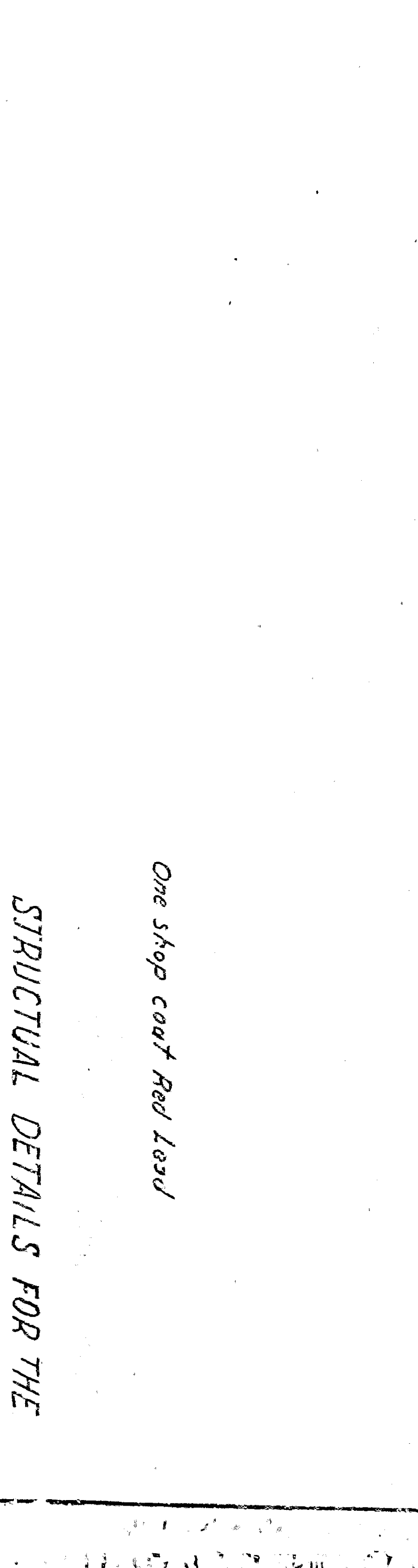
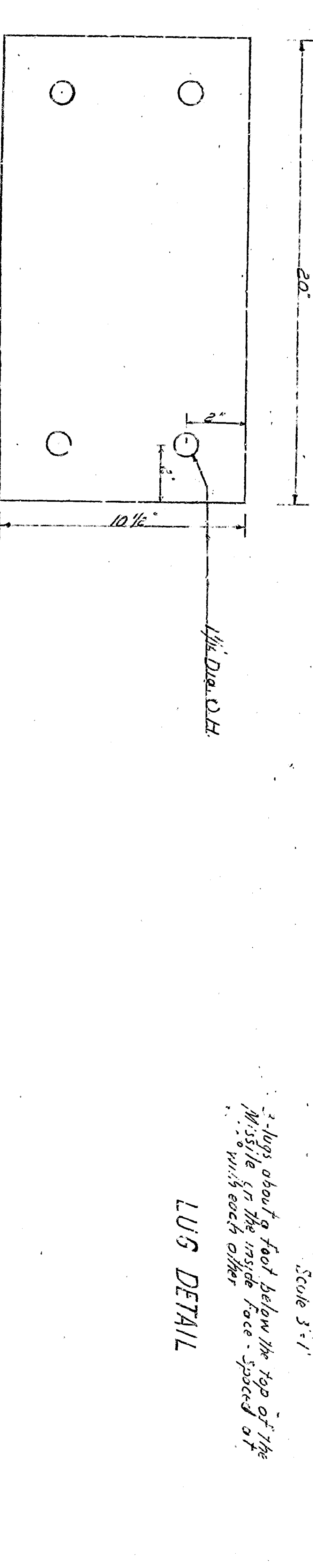
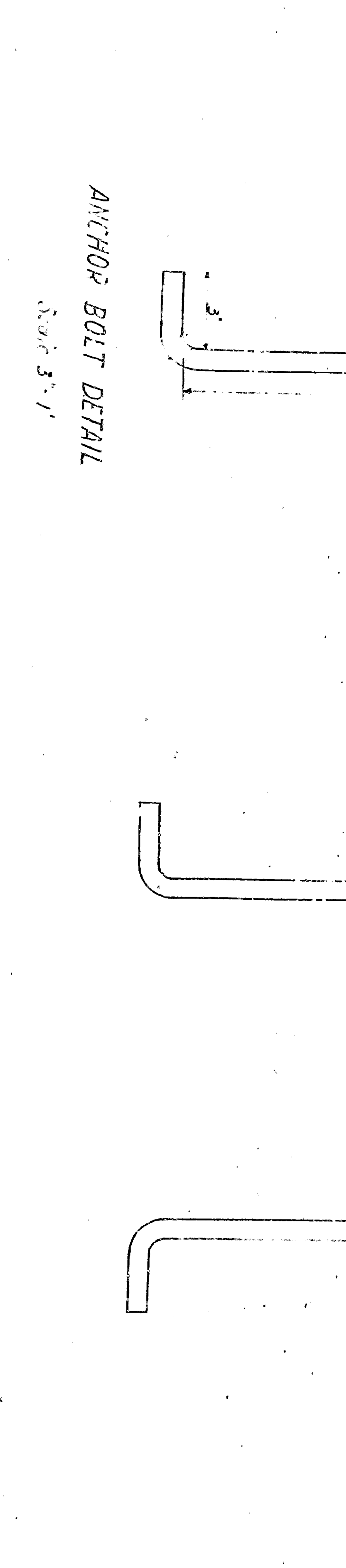
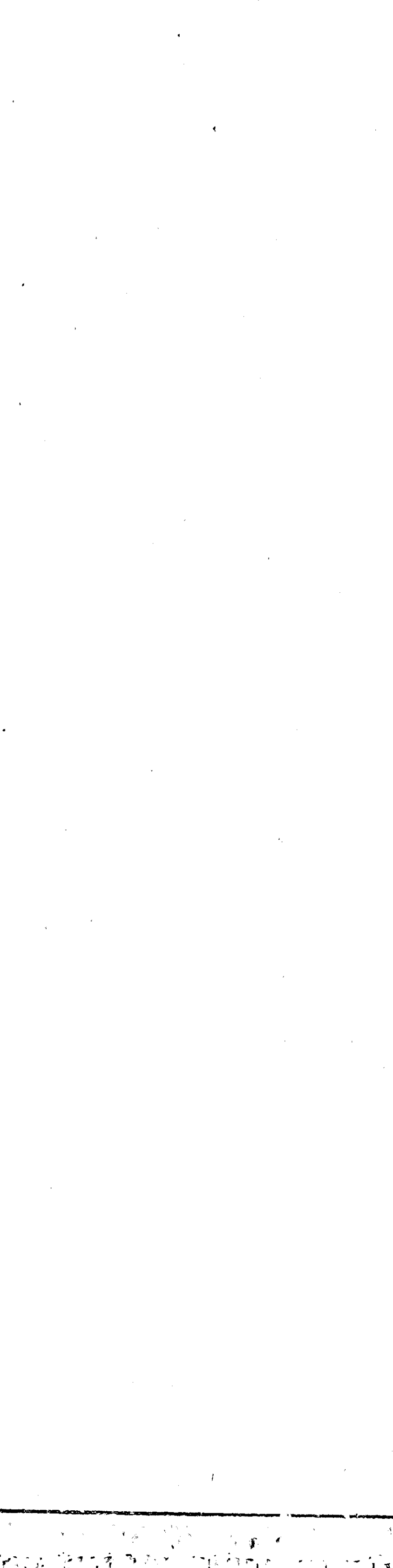
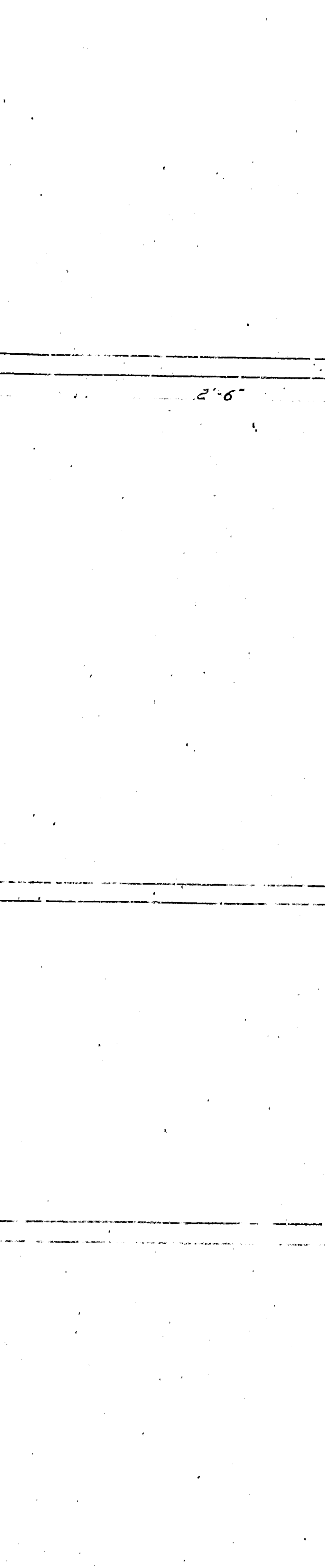
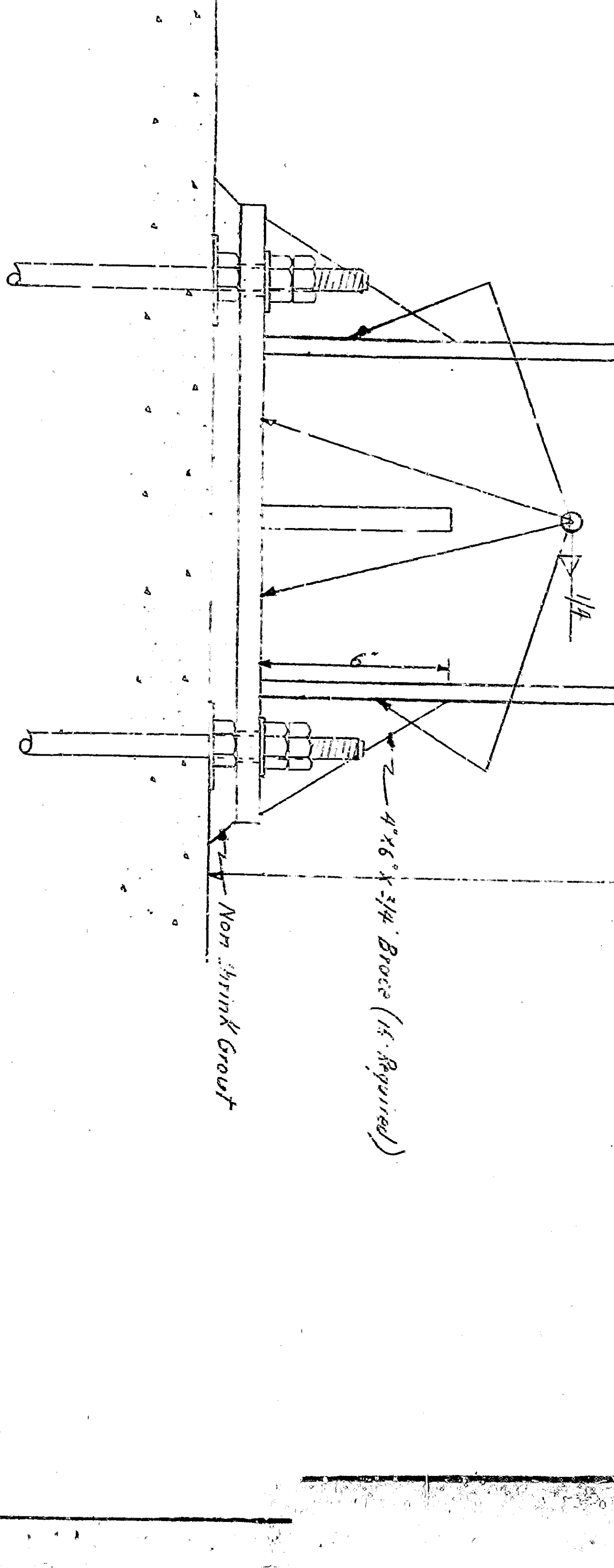
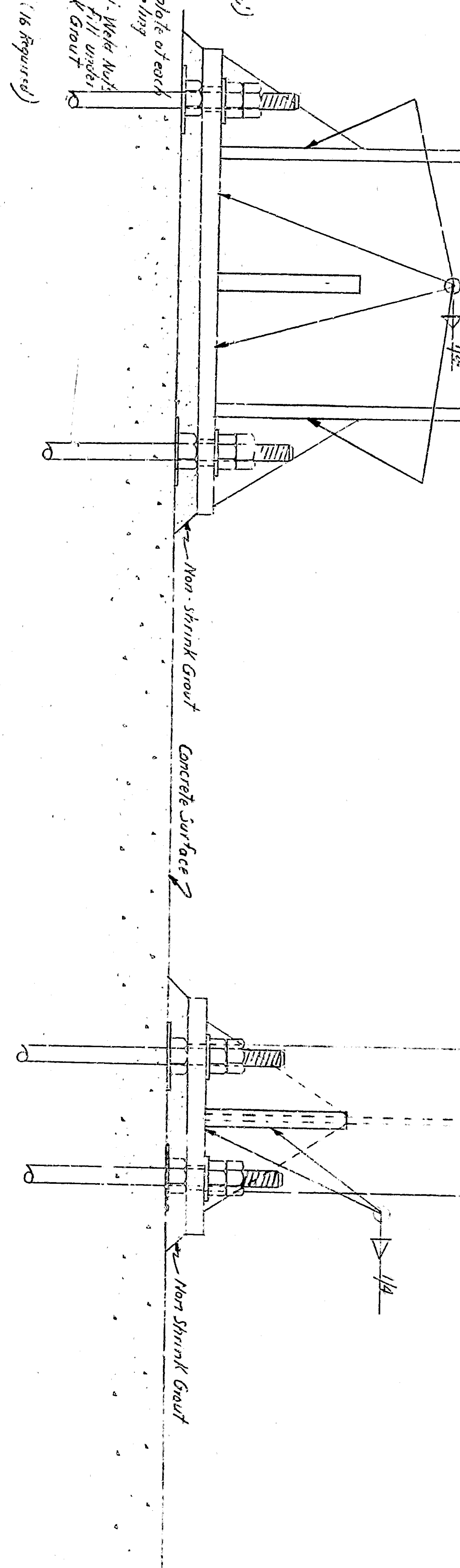
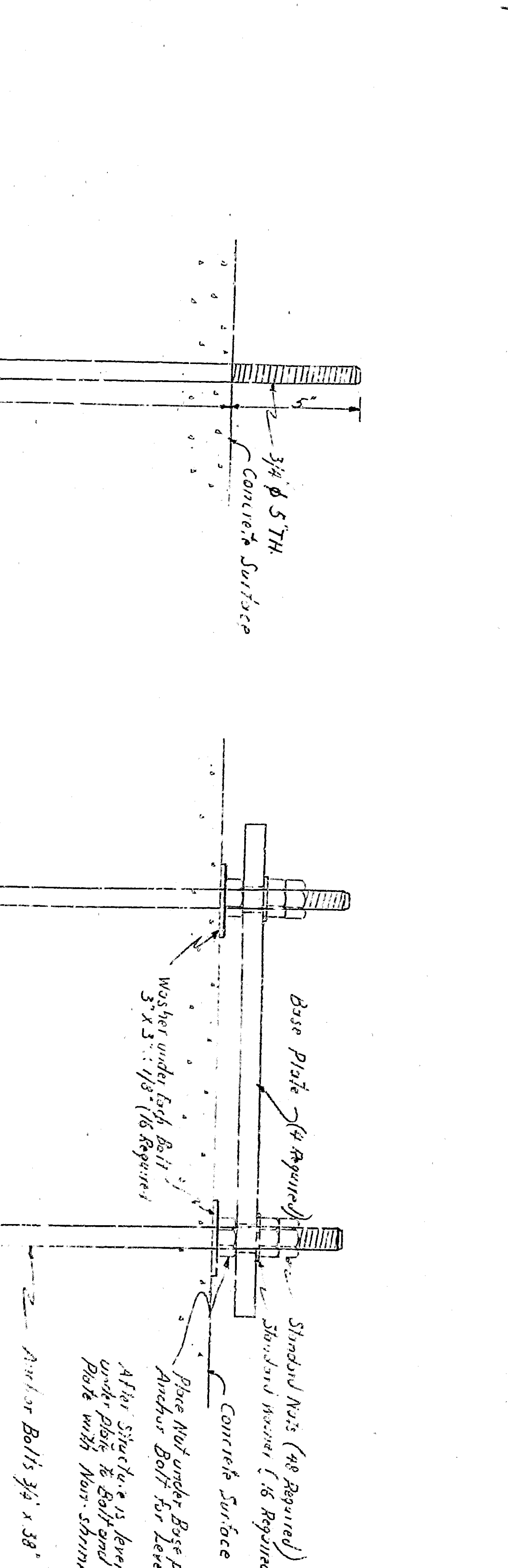
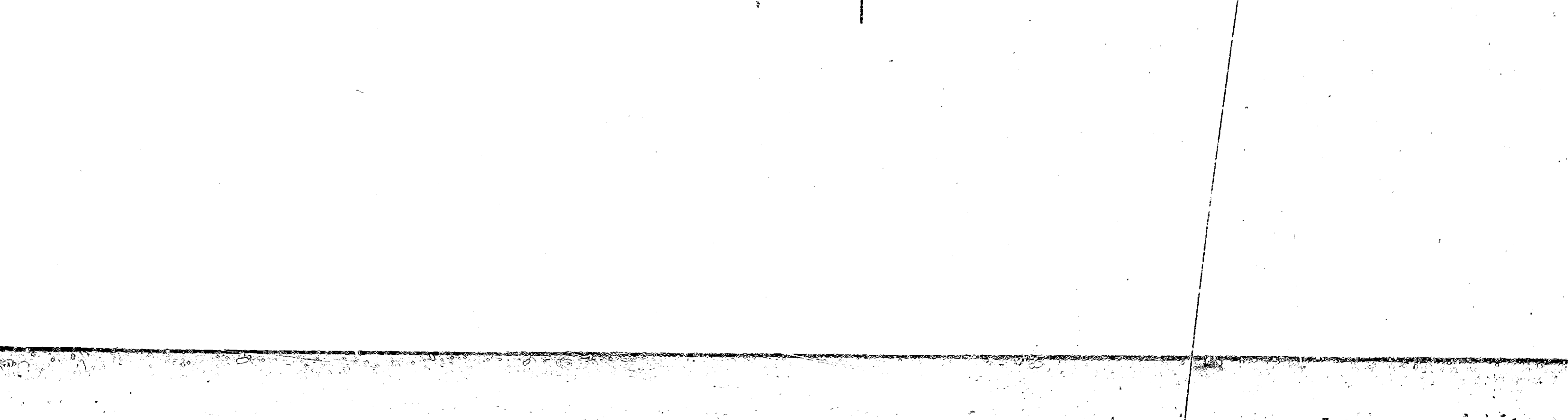
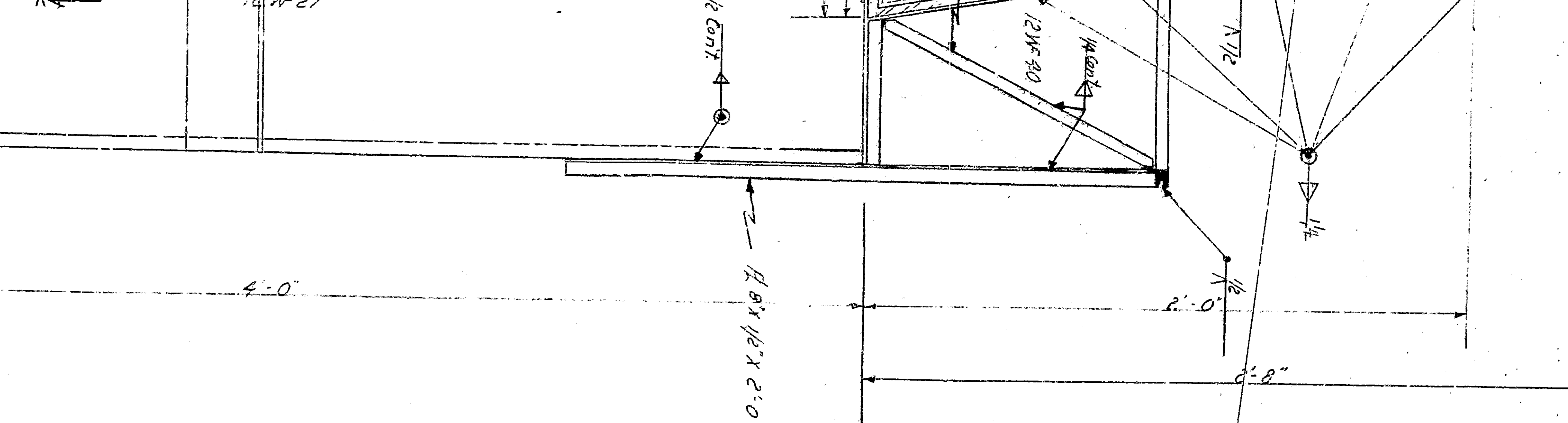
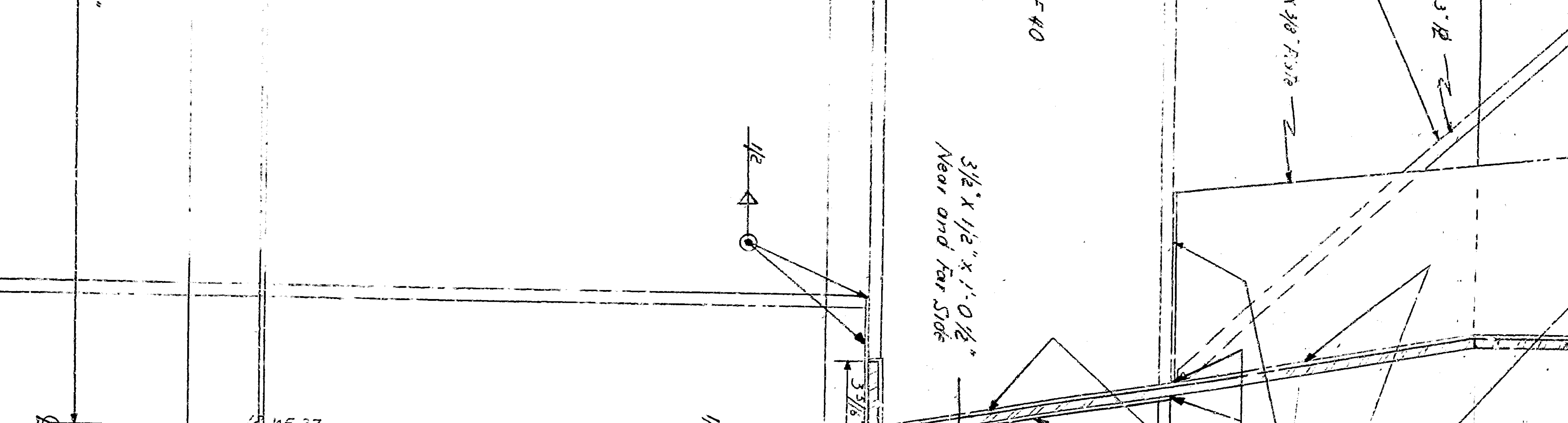
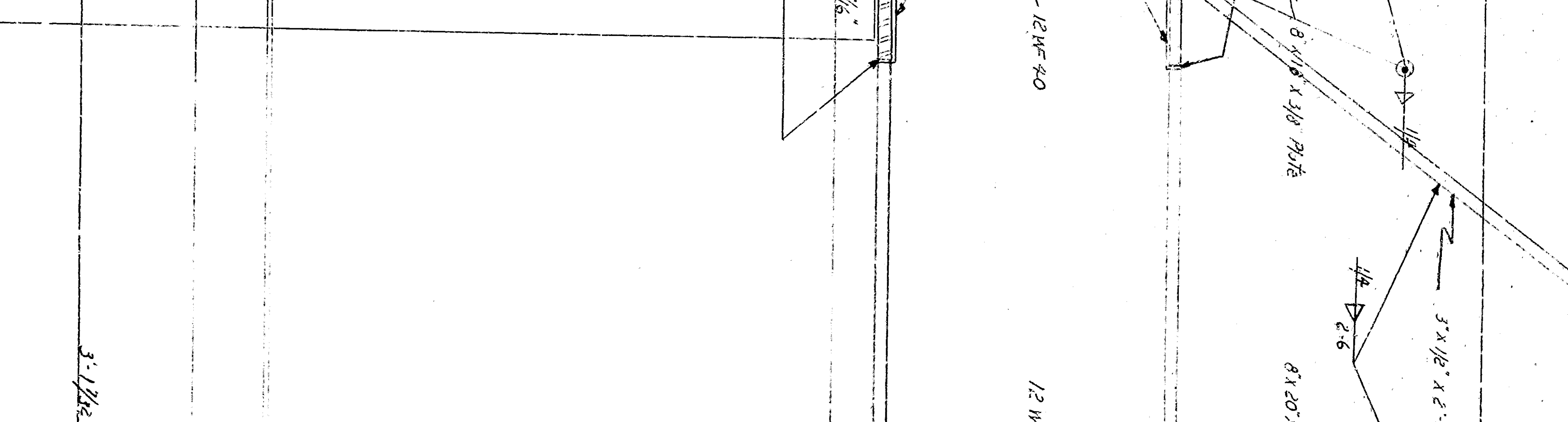
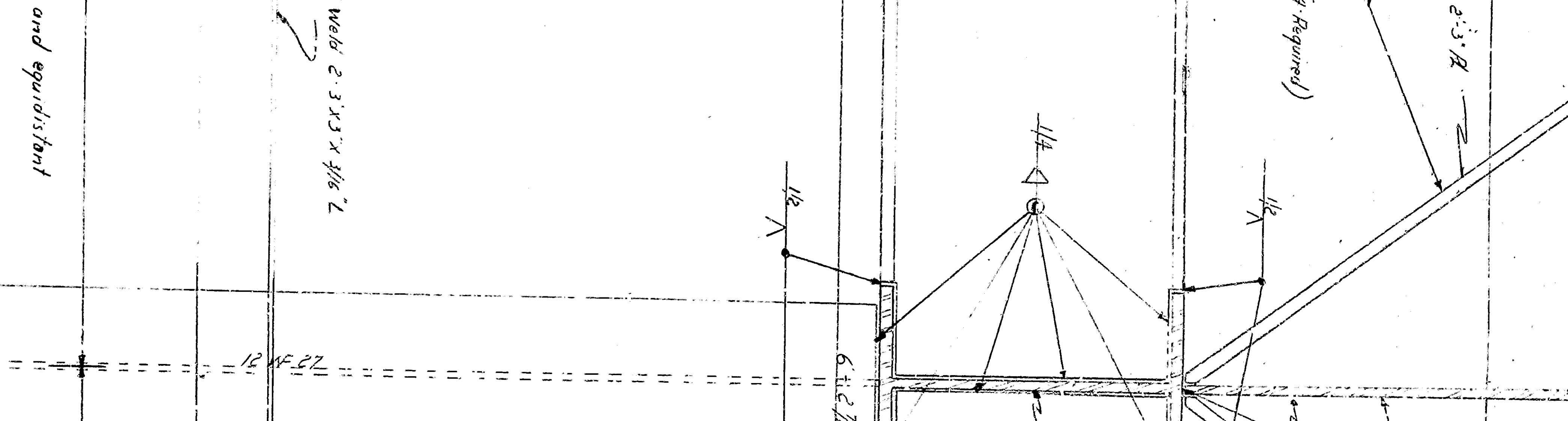
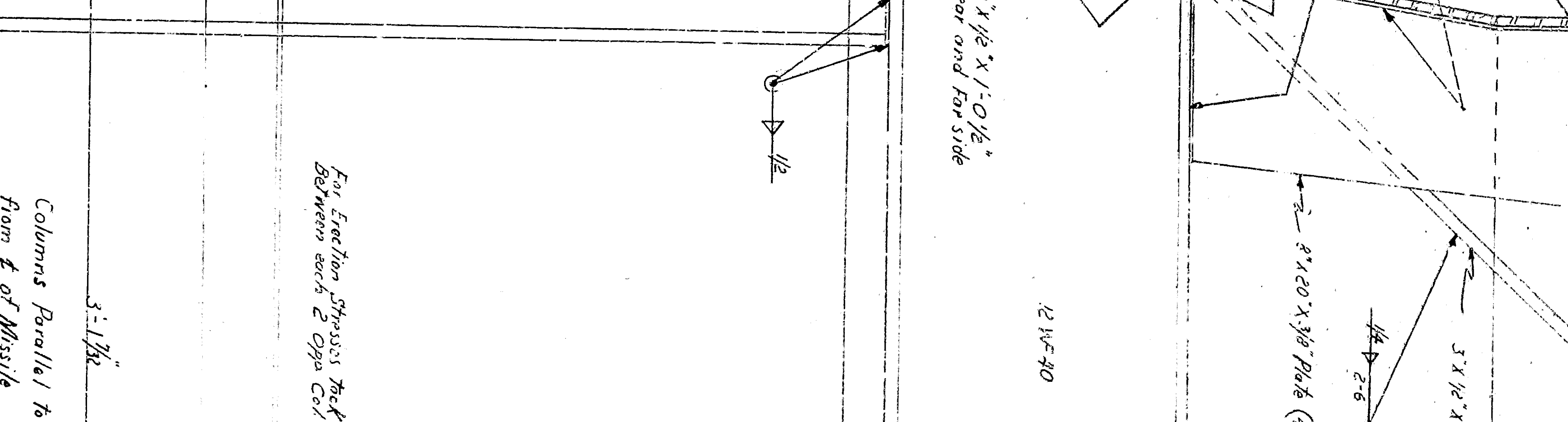
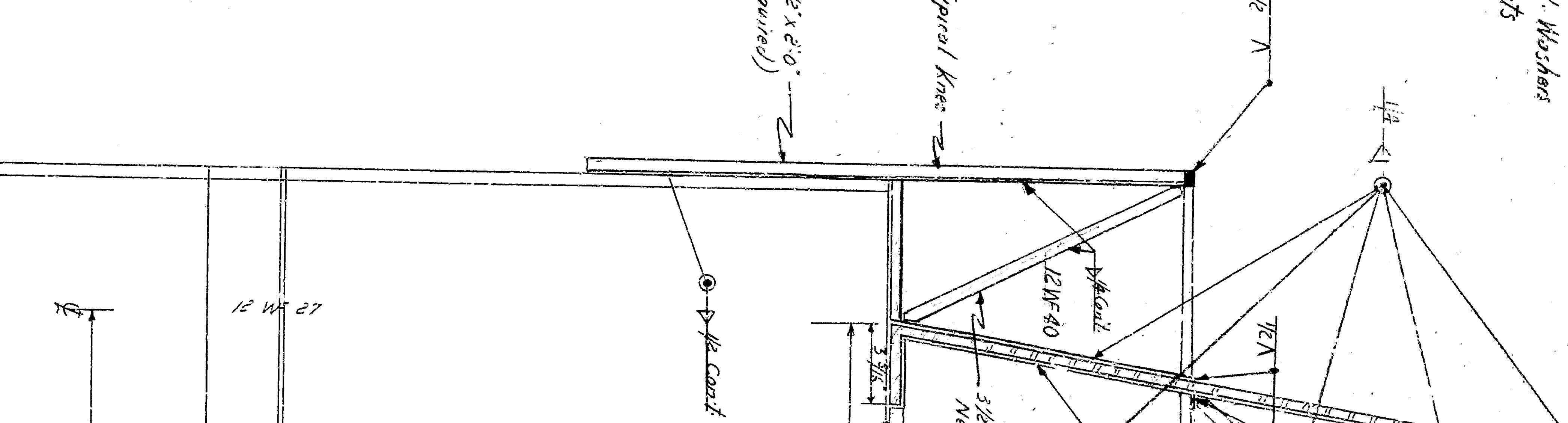
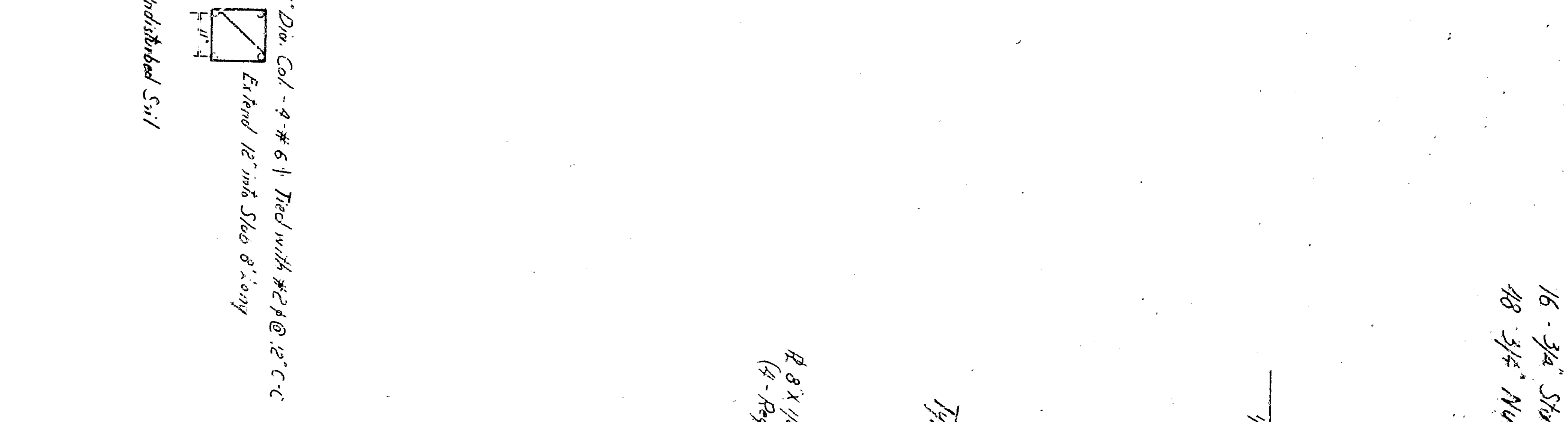
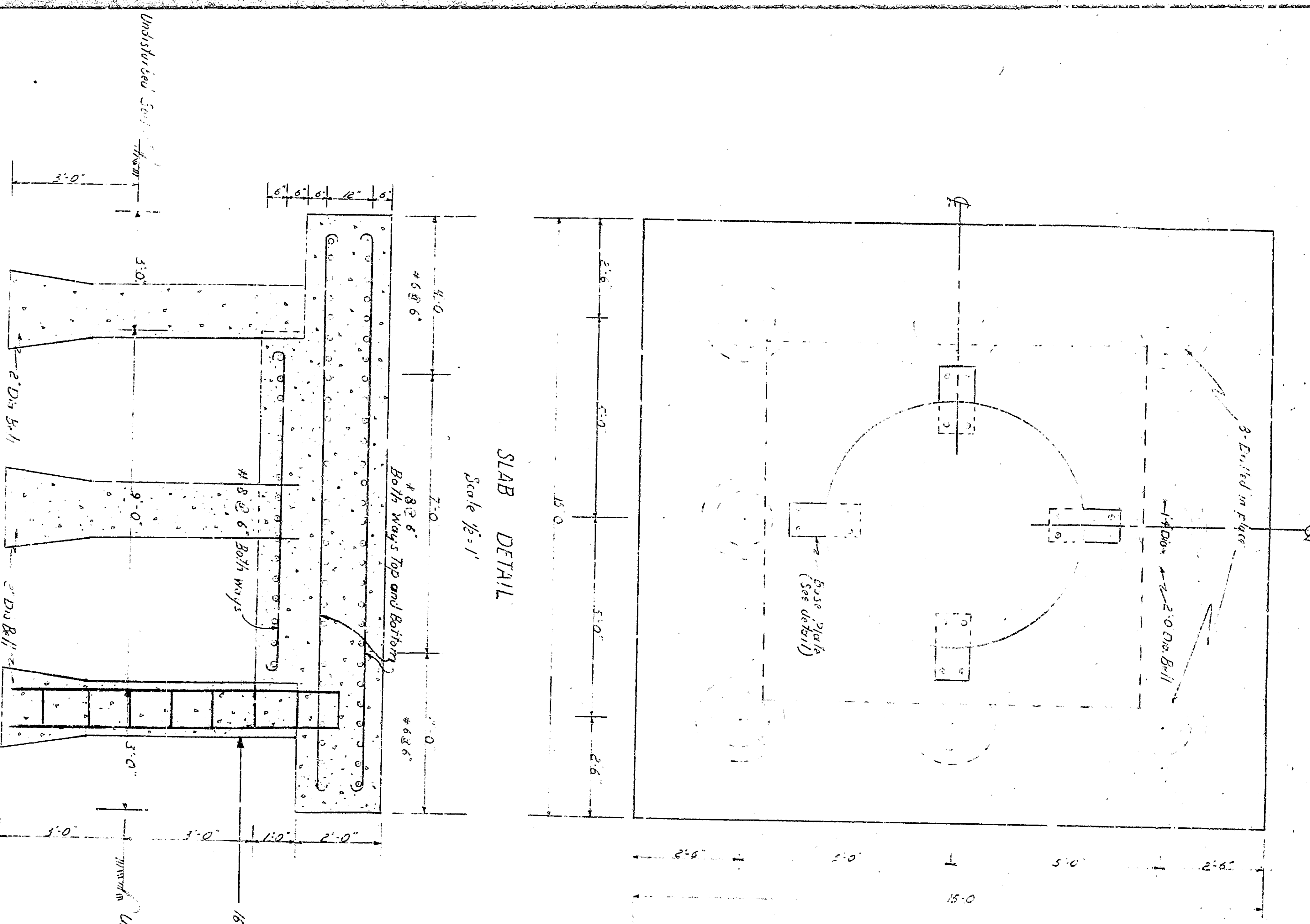
- STRUCTURAL STEEL  
Bill of Materials
- 2 L2W40-6'-2"
  - 4 L2W40-0'-5"
  - 4 L2W40-9'-0"
  - 4 L2W40-4'-8"
  - 16 L2W40-3'-6"
  - 8 L2W40-2'-3"
  - 4 L2W40-1'-0"
  - 4 L2W40-1'-0"
  - 4 L2W40-1'-0"
  - 16 Anchor Bolts 3/4" x 18"
  - 16 3/4" S&B Washers
  - 48 3/4" Nuts



STRUCTURAL DETAILS FOR THE ERECTION OF THE MINUTE MAN MISSILE

One Slope Coat Rod Load

- STRUCTURAL STEEL**  
 Bill of Materials
- 2 12W40-6'-2 1/2"
  - 4 12W40-0'-5 1/2"
  - 4 12W40-9'-0 1/2"
  - 4 12 8x120x48
  - 16 12 8x12x48
  - 4 12 102x120x11
  - 8 12 5x102x2x2 1/2
  - 4 L 3x3x9/16x7 1/2
  - 4 12 3/8x1/2x1'-0 1/2
  - 4 12 6x6x1/2
  - 4 12 6x6x1/2x2'-0"
  - 16 W8x18
  - 16 W8x18x1/2
  - 16 3/4x5/8x1/8
  - 16 3/4x5/8x1/8
  - 48 3/4x1/8x5



STRUCTURAL DETAILS FOR THE  
 ERECTION OF THE  
 MINUTE MAN MISSILE

One Shop Cast Rod Lead

3580